



GUNLAKE MARULAN QUARRY

Overview

The Gunlake Group (Gunlake), consisting of Gunlake Concrete and Gunlake Quarries, is an Australian family-owned business that is expanding to meet customer and market demands, across the Greater Sydney area, Southern Highlands and Southern Tablelands. Gunlake operates the Gunlake Quarry, approximately 7 km north-west of Marulan.

Gunlake is lodging an application to modify the quarry's current State Significant Development (SSD) consent to allow increased truck movements. Gunlake is also lodging a separate new SSD application for the Gunlake Quarry Continuation Project which would allow increased quarry production. Approval of these applications would allow the quarry to meet the increased demand projected for its high-quality products.

Modification application

The quarry's consent limits the average and maximum number of trucks that can be dispatched from the quarry each day. The modification application will seek to increase these limits on the Primary Transport Route (Brayton, Ambrose and Red Hills Roads from the Quarry entrance to the Hume Highway).

There will be no changes to the disturbance area, the pit depth, hours of operation, blasting frequency, or truck movements on the Secondary Transport Route, ie south of the Brayton Road/Ambrose Road intersection and through Marulan – see *Figure 1* over page.

The quarry's consent was granted by the NSW Land & Environment Court and so the modification application is to be made to the court. Its approval would provide an interim solution to meeting demand while the Gunlake Quarry Continuation Project SSD application is prepared, lodged and assessed.

Gunlake Quarry Continuation Project

The Gunlake Quarry Continuation Project application will be for a new SSD approval for the quarry. The application will be made through the NSW Department of Planning, Industry and Environment (DPIE).



The application will seek to:

- increase quarrying and processing rates;
- increase the workforce;
- increase truck movements from the site along the Primary Transport Route (Brayton, Ambrose and Red Hills Roads from the Quarry entrance to the Hume Highway); and
- extend the approval for quarry operations for 30 years to 2051.

There will be no changes to the disturbance area, the pit depth, hours of operation, blasting frequency, or the truck movements on the Secondary Transport Route, ie south of the Brayton Road/Ambrose Road intersection and through Marulan.

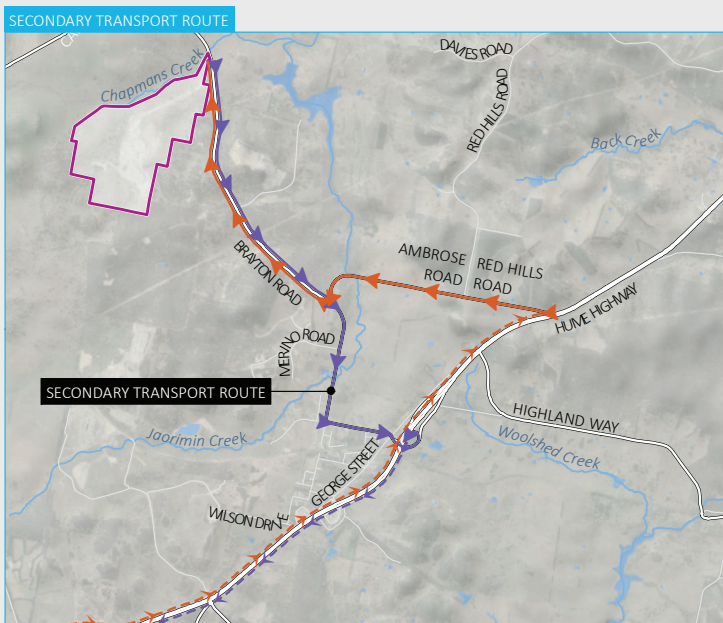
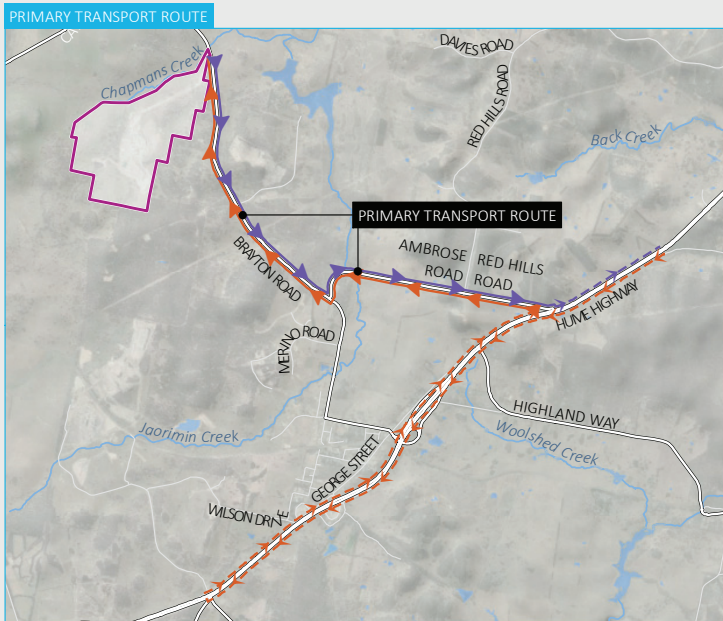
Over the next few months Gunlake Quarries will be preparing an environmental impact statement (EIS), to accompany the SSD application for the Gunlake Quarry Continuation Project. Technical studies that assess the environmental, economic and social impacts of the Gunlake Quarry Continuation Project will form part of the EIS.

The EIS will be placed on public exhibition. The community and other stakeholders will be invited to make a formal submission on the exhibited EIS. Gunlake will then provide responses to these submissions in a report to DPIE who will then prepare an assessment report.

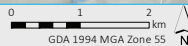
As a SSD, the consent authority will be a delegate of the Minister of Planning or the Independent Planning Commission (IPC).

Employment opportunities

The quarry currently employs about 52 people full-time and about 20 contractors. There will be a small increase in the quarry's workforce if the proposed modification is approved. There will be larger increases in the workforce associated with the Gunlake Quarry Continuation Project.



Source: EMM (2020); DFSI (2017); GA (2011); ASGC (2006)



- KEY**
- Site boundary
 - Inbound transport route
 - Inbound transport route (highway)
 - Outbound transport route
 - Outbound transport route (highway)
 - Major road
 - Minor road
 - Named watercourse
 - Waterbody

Figure 1: Transport Routes

In addition, around 200 contract truck drivers deliver products from the quarry. The proposed projects will provide further work for these drivers and opportunities for more drivers.

Visit Gunlake's website to register your interest in employment at the quarry (www.gunlake.com.au/careers).

How can you have your say?

Gunlake is committed to working with the community to understand your views, interests and what is important to you. Your feedback is an important part of the planning approvals process and assists in ensuring that the EIS addresses your issues and/or concerns and acknowledges the benefits to the community.

Gunlake will be conducting a range of engagement activities between November 2020 and February 2021 to ensure the local community and interested stakeholders are informed about the project and to collect their input. These engagement activities may include:

- meetings with key stakeholders;
- letters to residents on both the Primary and Secondary Transport Routes;
- community newsletters;
- community information sessions;
- webpage updates; and
- community email and phone number access for enquiries.

How can I find out more?

Gunlake will be holding a Community Information Session at the Marulan Memorial Hall on Friday 4th December 2020 from 2pm to 6pm.

As this will be a Covid Safe event, you will need to make an appointment to attend and convenient time slots will be allocated.

To register, please contact the Gunlake Quarry Community Team on the email address or telephone number below.

02 4841 1344

community@gunlake.com.au

www.gunlake.com.au